

STANDARD GROUND TAXI PROCEDURES

1. General
  - a. Departing IFR flights shall contact JEJU DELIVERY(121.925 MHz) to obtain ATC clearance at least 10 minutes prior to ETD and shall obtain push-back clearance and taxi instruction from JEJU GROUND(121.65 MHz).
  - b. TWY E3 not available for aircraft with a wingspan of 118 ft (36 m) or longer.

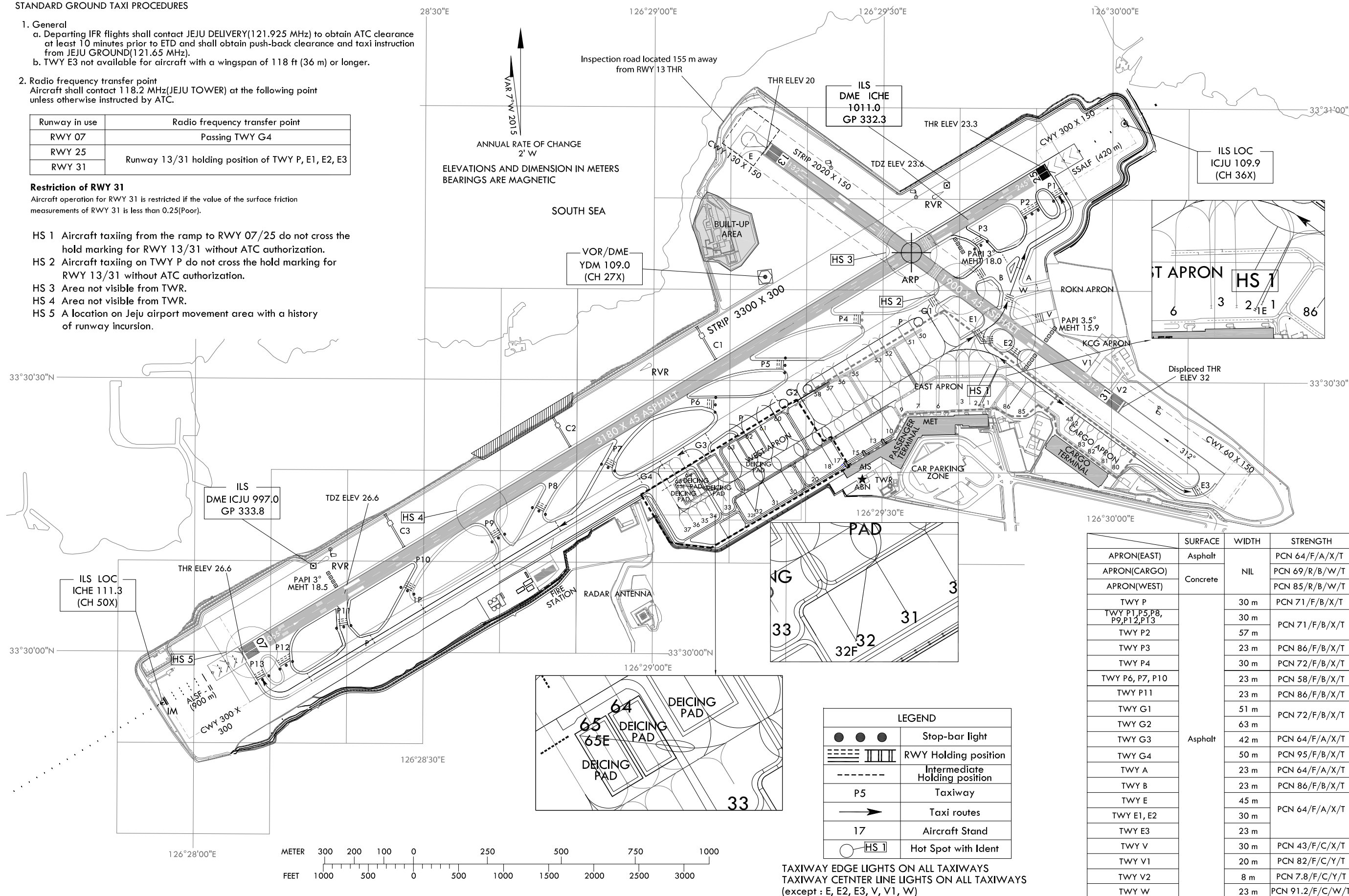
2. Radio frequency transfer point  
Aircraft shall contact 118.2 MHz(JEJU TOWER) at the following point unless otherwise instructed by ATC.

Runway in use	Radio frequency transfer point
RWY 07	Passing TWY G4
RWY 25	Runway 13/31 holding position of TWY P, E1, E2, E3
RWY 31	

Restriction of RWY 31

Aircraft operation for RWY 31 is restricted if the value of the surface friction measurements of RWY 31 is less than 0.25(Poor).

- HS 1 Aircraft taxiing from the ramp to RWY 07/25 do not cross the hold marking for RWY 13/31 without ATC authorization.
- HS 2 Aircraft taxiing on TWY P do not cross the hold marking for RWY 13/31 without ATC authorization.
- HS 3 Area not visible from TWR.
- HS 4 Area not visible from TWR.
- HS 5 A location on Jeju airport movement area with a history of runway incursion.



	SURFACE	WIDTH	STRENGTH
APRON(EAST)	Asphalt		PCN 64/F/A/X/T
APRON(CARGO)		NIL	PCN 69/R/B/W/T
APRON(WEST)	Concrete		PCN 85/R/B/W/T
TWY P		30 m	PCN 71/F/B/X/T
TWY P1, P5, P8, P9, P12, P13		30 m	PCN 71/F/B/X/T
TWY P2		57 m	PCN 71/F/B/X/T
TWY P3		23 m	PCN 86/F/B/X/T
TWY P4		30 m	PCN 72/F/B/X/T
TWY P6, P7, P10		23 m	PCN 58/F/B/X/T
TWY P11		23 m	PCN 86/F/B/X/T
TWY G1		51 m	PCN 72/F/B/X/T
TWY G2	Asphalt	63 m	PCN 72/F/B/X/T
TWY G3		42 m	PCN 64/F/A/X/T
TWY G4		50 m	PCN 95/F/B/X/T
TWY A		23 m	PCN 64/F/A/X/T
TWY B		23 m	PCN 86/F/B/X/T
TWY E		45 m	PCN 64/F/A/X/T
TWY E1, E2		30 m	PCN 64/F/A/X/T
TWY E3		23 m	
TWY V		30 m	PCN 43/F/C/X/T
TWY V1		20 m	PCN 82/F/C/Y/T
TWY V2		8 m	PCN 7.8/F/C/Y/T
TWY W		23 m	PCN 91.2/F/C/W/T

TAXIWAY EDGE LIGHTS ON ALL TAXIWAYS  
TAXIWAY CENTER LINE LIGHTS ON ALL TAXIWAYS  
(except : E, E2, E3, V, V1, W)

AERODROME GROUND  
MOVEMENT CHART - ICAO

APRON ELEV 27 m

TWR 118.2 236.6  
GND 121.65

JEJU / Jeju Intl  
RWY 07/25, RWY 31 ARRIVAL

STANDARD GROUND TAXI PROCEDURES

1. General

- a. General aviation aircraft will be guided by the FOLLOW ME vehicle or marshallers to the parking area for small aircraft.
- b. TWY E3 not available for aircraft with a wingspan of 118 ft (36 m) or longer.
- c. FOLLOW ME service is available to arriving ACFT. Pilot should make the request to JEJU GROUND.

2. Radio frequency transfer procedure

Aircraft shall contact JEJU TOWER(118.2 MHz) to JEJU GROUND (121.65 MHz) when vacating Runway.

Restriction of RWY 31

Aircraft operation for RWY 31 is restricted if the value of the surface friction measurements of RWY 31 is less than 0.25(Poor).

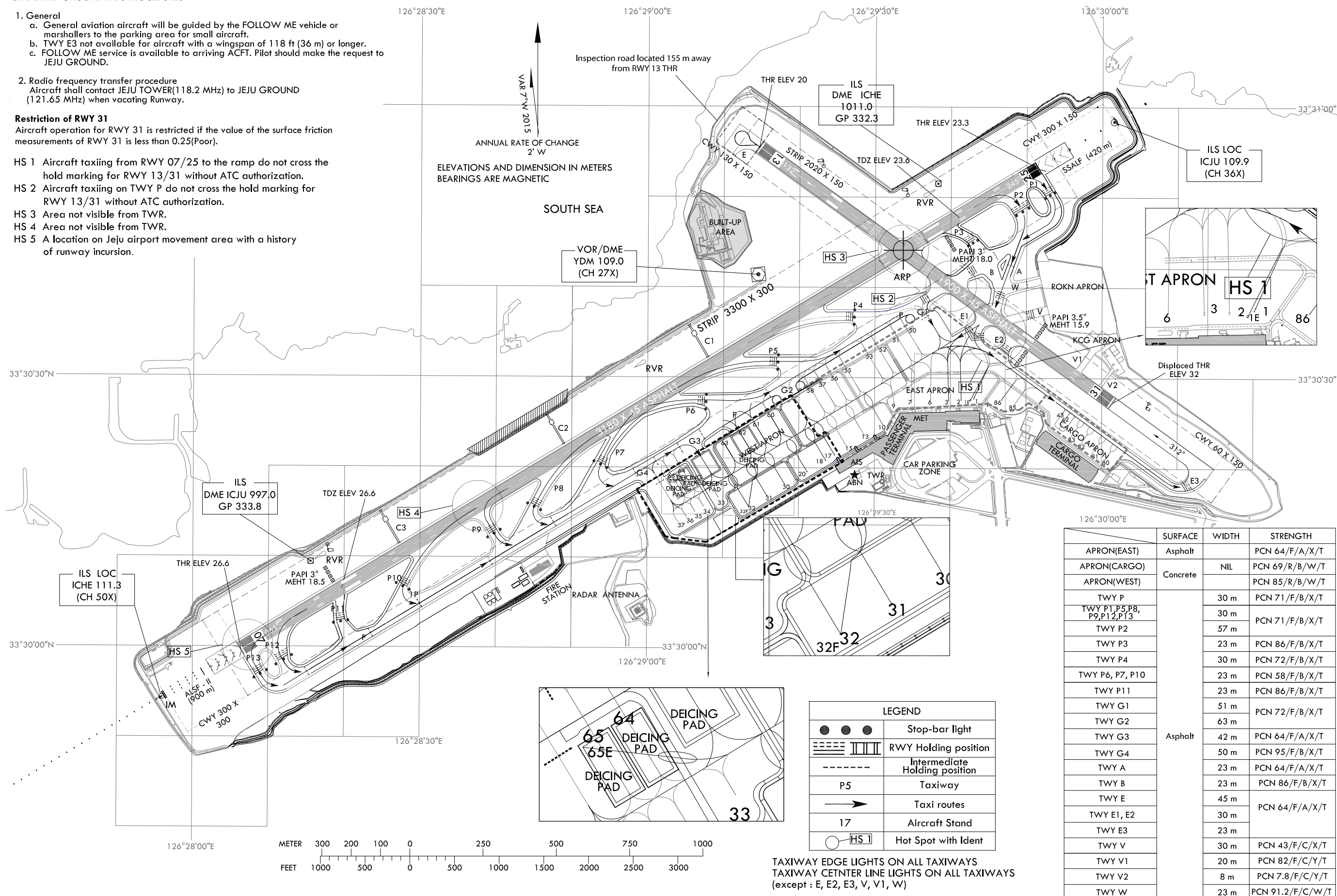
HS 1 Aircraft taxiing from RWY 07/25 to the ramp do not cross the hold marking for RWY 13/31 without ATC authorization.

HS 2 Aircraft taxiing on TWY P do not cross the hold marking for RWY 13/31 without ATC authorization.

HS 3 Area not visible from TWR.

HS 4 Area not visible from TWR.

HS 5 A location on Jeju airport movement area with a history of runway incursion.



	SURFACE	WIDTH	STRENGTH
APRON(EAST)	Asphalt		PCN 64/F/A/X/T
APRON(CARGO)		NIL	PCN 69/R/B/W/T
APRON(WEST)	Concrete		PCN 85/R/B/W/T
TWY P		30 m	PCN 71/F/B/X/T
TWY P1, P5, P8, P9, P12, P13		30 m	PCN 71/F/B/X/T
TWY P2		57 m	PCN 71/F/B/X/T
TWY P3		23 m	PCN 86/F/B/X/T
TWY P4		30 m	PCN 72/F/B/X/T
TWY P6, P7, P10		23 m	PCN 58/F/B/X/T
TWY P11		23 m	PCN 86/F/B/X/T
TWY G1		51 m	PCN 72/F/B/X/T
TWY G2	Asphalt	63 m	PCN 64/F/A/X/T
TWY G3		42 m	PCN 64/F/A/X/T
TWY G4		50 m	PCN 95/F/B/X/T
TWY A		23 m	PCN 64/F/A/X/T
TWY B		23 m	PCN 86/F/B/X/T
TWY E		45 m	PCN 64/F/A/X/T
TWY E1, E2		30 m	
TWY E3		23 m	
TWY V		30 m	PCN 43/F/C/X/T
TWY V1		20 m	PCN 82/F/C/Y/T
TWY V2	8 m	PCN 7.8/F/C/Y/T	
TWY W	23 m	PCN 91.2/F/C/W/T	

TAXIWAY EDGE LIGHTS ON ALL TAXIWAYS  
TAXIWAY CENTER LINE LIGHTS ON ALL TAXIWAYS  
(except : E, E2, E3, V, V1, W)

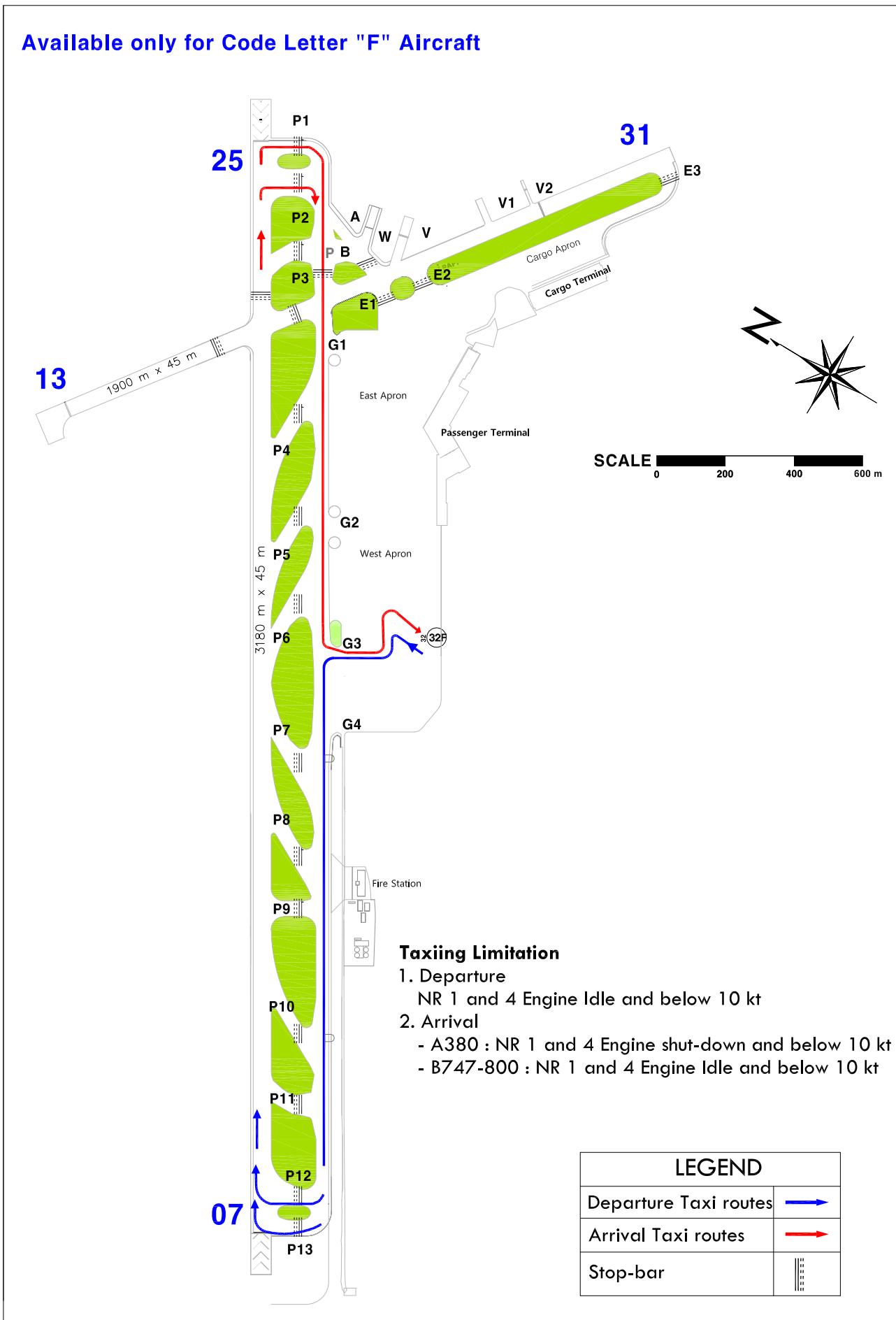
Change : Establishment of TWY W, Withdrawal of ACFT stand NR. 41 and Information of ACFT stand NR. 82, 83.



JEJU TWR 118.2  
JEJU GND 121.65

"F" aircraft Available taxi route - RWY 07 IN USE

Available only for Code Letter "F" Aircraft

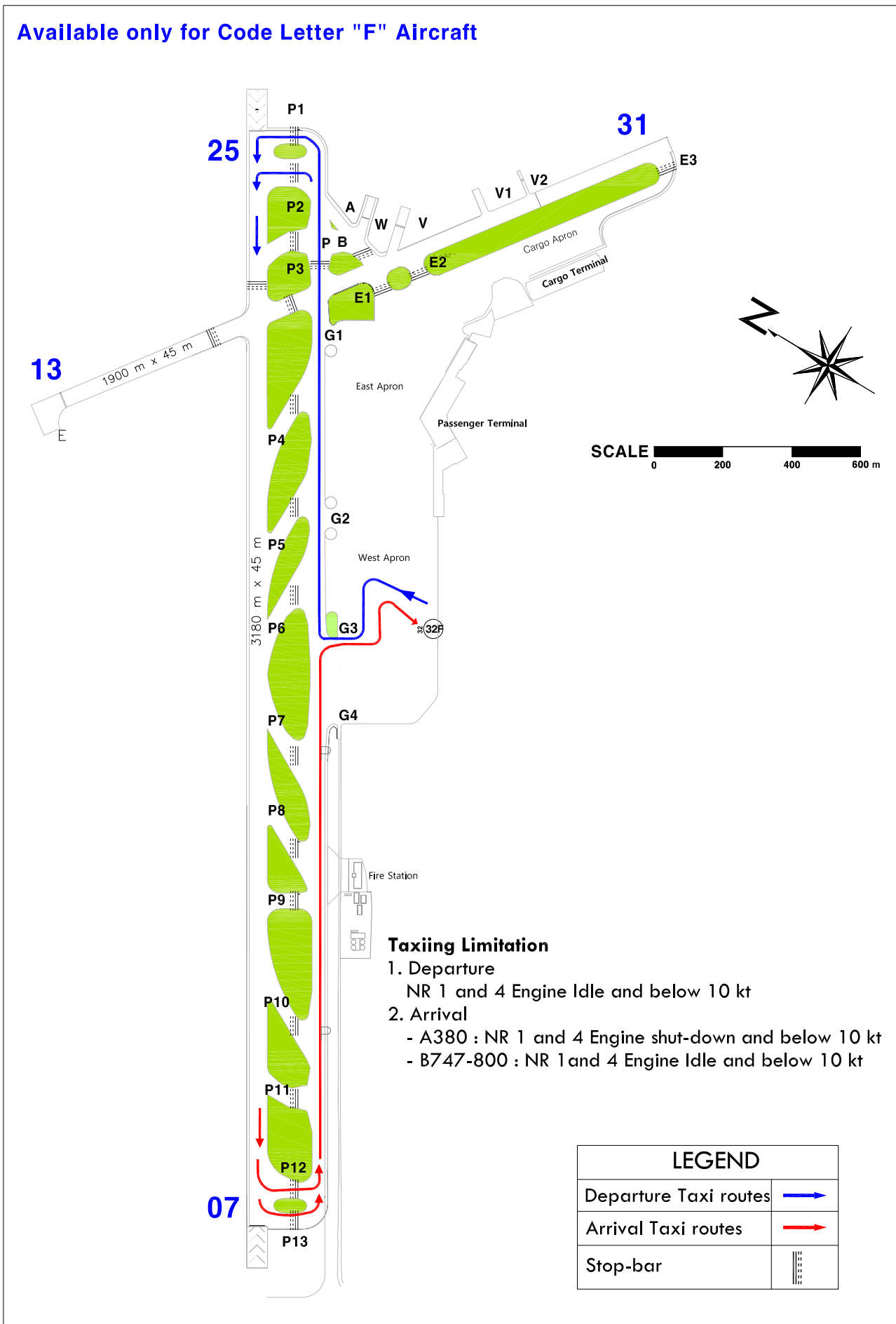


Change : Establishment of TWY W.

JEJU TWR 118.2  
JEJU GND 121.65

"F" aircraft Available taxi route - RWY 25 IN USE

Available only for Code Letter "F" Aircraft



Change : Establishment of TWY W.